

**CONSTRUCTION** Tufting 1/10" loop pile  
**STRUCTURE** Tufté 1/10" bouclé  
**STRUKTUR** Getuftet 1/10" Schlinge  
**STRUCTUUR** Getuft 1/10" lussenpool

**PILE MATERIAL** 100% PA solution dyed  
**COMPOSITION DU VELOURS**  
**POLMATERIAL**  
**POOLMATERIAAL**

**PRIMARY BACKING** non woven PES  
**SUPPORT** non woven PES  
**TRÄGERMATERIAL** Vlies, PES  
**TUFTDOEK** non woven PES

**SECONDARY BACKING** Action Back  
**DOSSIER**  
**RÜCKEN**  
**TAPIJTRUG**

**PILE WEIGHT** Ca. 540 gr/m<sup>2</sup>  
**POIDS DU VELOURS**  
**POLEINSATZGEWICHT**  
**POOLGEWICHT**

**TOTAL WEIGHT** Ca. 1.800 gr/m<sup>2</sup>  
**POIDS TOTAL**  
**GESAMTGEWICHT**  
**TOTAAL GEWICHT**

**PILE HEIGHT** Ca. 3,0 mm  
**EPAISSEUR DU VELOURS**  
**POLHÖHE**  
**POOLHOOGTE**

**TOTAL HEIGHT** Ca. 5,4 mm  
**EPAISSEUR TOTAL**  
**GESAMTHÖHE**  
**TOTALE DIKTE**

**TUFT DENSITY** Ca. 180 000/m<sup>2</sup>  
**NOMBRES DE POINTS**  
**NOPPENZAHL**  
**AANTAL PUNTEN**

**PILE DENSITY** Ca. 0.111 g/cm<sup>3</sup>  
**DENSITÉ DU VELOURS**  
**POLROHDICHTE**  
**POOLDICHTHEID**

**CLASSIFICATION** EN 1307  
**CLASSEMENT** 33 - LC1  
**KLASSIFIKATION**  
**CLASSIFICATIE**

**CASTOR CHAIR SUITABILITY** EN 985  
**CHAISE À ROULETTES** A: intensive use  
**STUHLROLLENEIGNUNG**  
**ROLSTOELGESCHIKTHEID**

**STAIR SUITABILITY** EN 1963  
**ESCALIERS** A: intensive use  
**TREPPENEIGNUNG**  
**TRAPPENGESCHIKTHEID**

**PERMANENTLY ANTISTATIC** ISO 6356  
**ANTISTATIC PERMANENT** < 2 kV  
**PERMANENT ANTISTATISCH**  
**PERMANENT ANTISTATISCH**

**IMPACT NOISE RATING** ISO 140-8  
**ISOLATION PHONIQUE** tbc dB ΔLw  
**TRITTSCHALLVERBESSERUNG**  
**GELUIDSISOLATIE**

**SOUND ABSORPTION** ISO 354  
**ABSORPTION PHONIQUE** tbc αw  
**SCHALLABSORPTIONSGRAD**  
**GELUIDSABSORPTIE**

**THERMAL RESISTANCE** ISO 8302  
**RÉSISTANCE THERMIQUE** 0,07 m<sup>2</sup> K/W  
**WÄRMEDURCHLASSWIDERSTAND**  
**WARMTEDOORLAATWEERSTAND**

**FASTNESS TO LIGHT** ISO 105-B02  
**SOLIDITÉ A LA LUMIÈRE** ≥ 7  
**LICHTECHTHEIT**  
**LICHTECHTHEID**

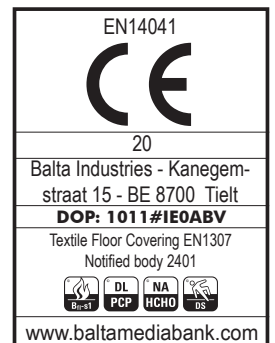
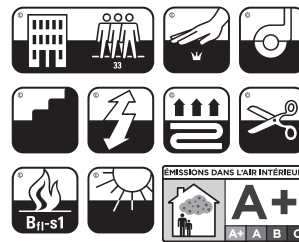
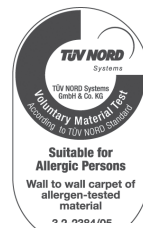
**COLOUR FASTNESS TO WATER** EN ISO 105-E01  
**SOLIDITÉ À L'EAU** ≥ 4-5  
**WASSERECHEIT**  
**WATERECHTHEID**

**FIRE RESISTANCE** EN 13501-1  
**COMPORTEMENT AU FEU** Bfl-s1(if glued)  
**BRENNVERHALTEN**  
**BRANDGEDRAG**

**RUBBING FASTNESS** EN ISO 105-X12  
**SOLIDITÉ AU FROTTEMENT** ≥ 4  
**REIBECHTHEIT**  
**WRIJFECHTHEID**

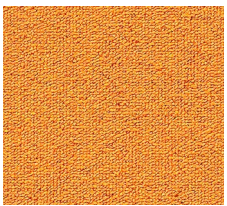
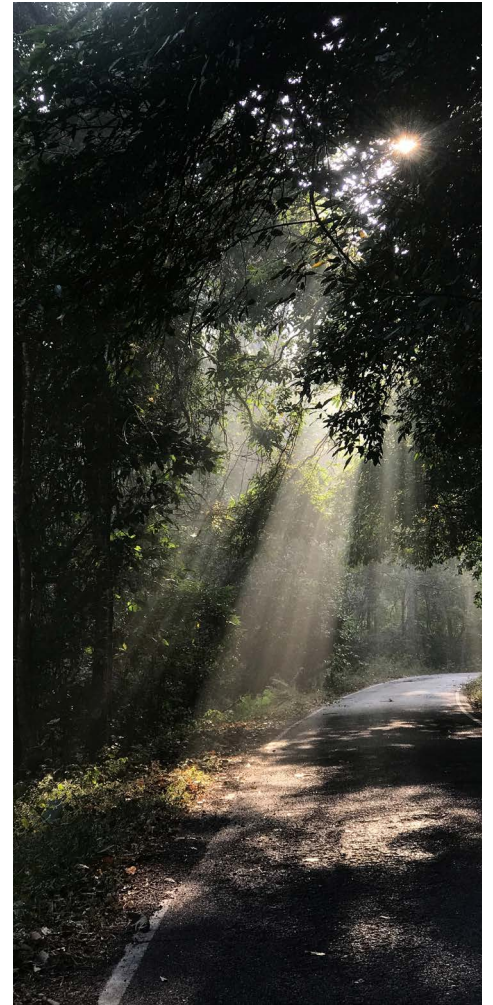
**NUMBER OF COLOURS** 18  
**NOMBRES DE COULEURS**  
**ANZAHL FARBEN**  
**AANTAL KLEUREN**

**WIDTH** EN ISO 3018  
**LARGEUR** ca. 400 cm  
**BREITE**  
**BREEDTE**





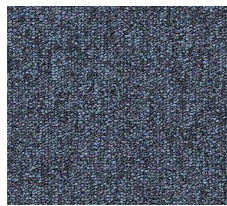
# e - blitz AB



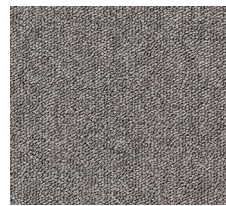
▲ 55



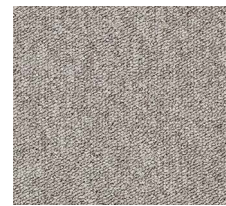
▲ 21



▲ 76



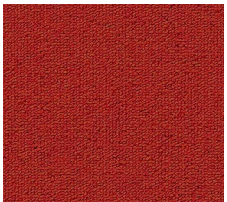
▲ 46



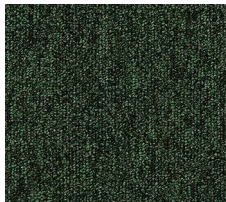
▲ 32



▲ 34



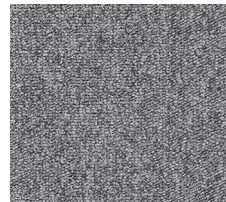
▲ 10



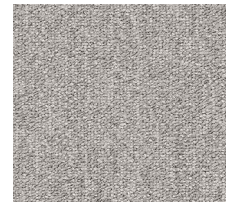
▲ 28



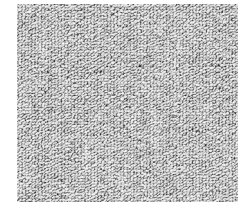
▲ 78



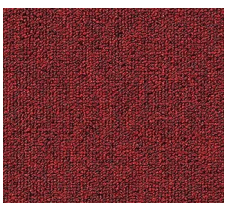
▲ 95



▲ 193



▲ 90



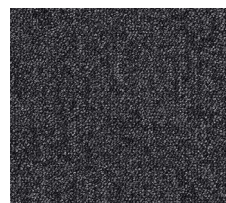
▲ 12



▲ 45



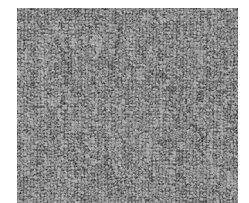
▲ 87



▲ 99



▲ 96



▲ 195